

Forbes Marshall View Glass

Description

The Forbes Marshall View Glass, VU10, is a range of single and double window view glasses available in cast iron screwed connections.

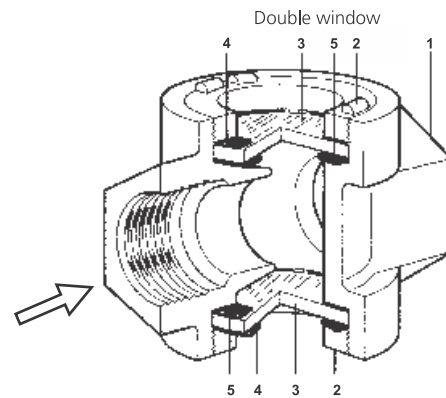
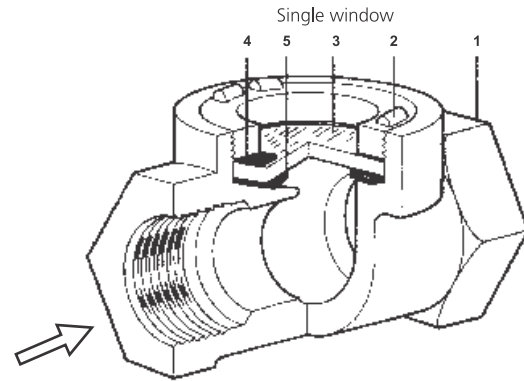
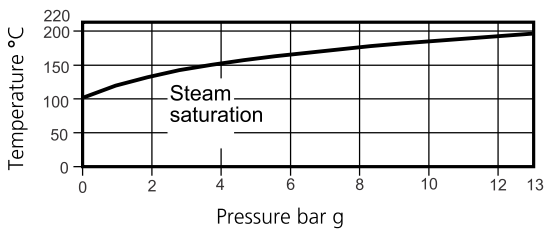
Sizes and End Connections

Single Window DN 15, 20 and 25 screwed BSPT / NPT
Double window DN 40 and DN 50 screwed BSPT / NPT

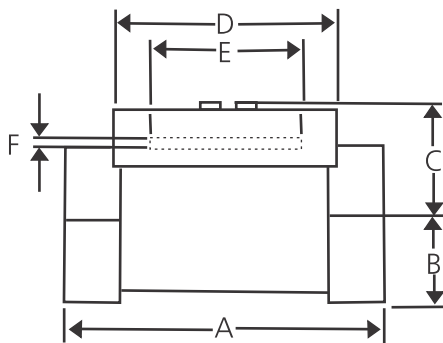
Limiting Conditions

PMO - Max. working pressure	13.0 bar g
TMO - Max. working pressure	220°C
Cold hydraulic test pressure	26.0 bar g

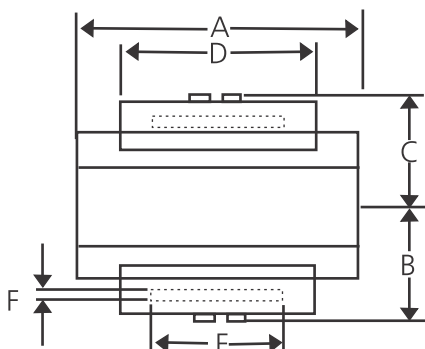
Operating Range



Single Window



Double window



Material

Sr.No.	Part	Material	Standard
1.	Body	Cast iron	IS 210 Gr. FG260
2.	Bazel	Brass	BSS 218
3.	Glass	Toughened glass	
4.	Top gasket	Asbestos free	
5.	Bottom gasket	Synthetic fibre	

Dimensions / Weights (approx.) in mm

Single Window

Size	A	B	C	D	E	F	Weight
DN 15	89	18	32	64	50	5	0.8 Kg
DN 20	89	18	32	64	50	5	0.8 Kg
DN 25	89	24	37	64	50	5	1 Kg

Double window

Size	A	B	C	D	E	F
DN 40	108	51	51	64	50	5
DN 50	114	51	51	64	50	5

How to Order

Example: 1 No. DN 25 Forbes Marshall View Glass VU10 screwed BSPT connection

Safety Information, Installation and Maintenance

Safe operation of these units can only be guaranteed if they are properly installed, commissioned and maintained by a qualified person in compliance with the operating instructions. General installation and safety instructions for pipeline and plant constructions, as well as the proper use of tools and safety equipment must also be complied with.

Warning

Under certain conditions corrosive elements in condensate can affect the inner face of the window (s), particularly where caustic alkali and hydrofluoric acid are present. It is recommended that the sight glass is periodically checked. If there is evidence of thinning or erosion damage then the window(s) should be replaced immediately. Always wear eye protection when viewing the contents of the view glass.

Installation and Maintenance Note

View glasses should have stop valves fitted on both inlet and outlet. It is imperative that the upstream stop valve is closed first in order to prevent over pressurization.

View glasses can be fitted in either a horizontal or vertical line on the outlet side of a steam trap. Where the trap is a blast discharge type e.g. thermodynamic, the view glass must be fitted at least 1m from the trap. This is to ensure that the glass is not subjected to thermal shock or pressure. Reasonable steps should be taken to protect personnel from injury in the unlikely event that the glass breaks.

Ensure access is available for maintenance purposes.

Disposal

The product is recyclable. No ecological hazard is anticipated with disposal of this product providing due care is taken.

Spare Parts

The spare parts available are shown in heavy outline. Parts drawn in broken line are supplied as spares.

Available Spares

Set of glass and gasket (pack of 2)	3, 4, 5
-------------------------------------	---------

How to Order Spares

Always order Spares by using the description given in the column headed "Available Spares" and state the size and type of view glass.

Recommended Tightening Torque for Bazel (Brass Ring)

Size (DN)	Torque (Nm)
15 TO 50	15

